

CastleHaven



6 Proteus Place Kellyville NSW

3  2  2 

Step into comfort and elegance with this well presented single-level home, perfectly situated on a prime 600msq block in a stunning, quiet cul-de-sac within a highly sought-after Kellyville estate.

Upon entering, you'll be greeted by a tiled entry foyer which leads to a large open plan study, perfect for working from home or a quiet retreat and a sunken formal lounge. The versatile floor plan effortlessly accommodates your needs and could easily be converted into a four-bedroom home, adapting to your lifestyle.

The well-designed layout flows seamlessly into a spacious, tiled family/rumpus room, which connects to the modern kitchen. This impressive kitchen features stone bench tops,

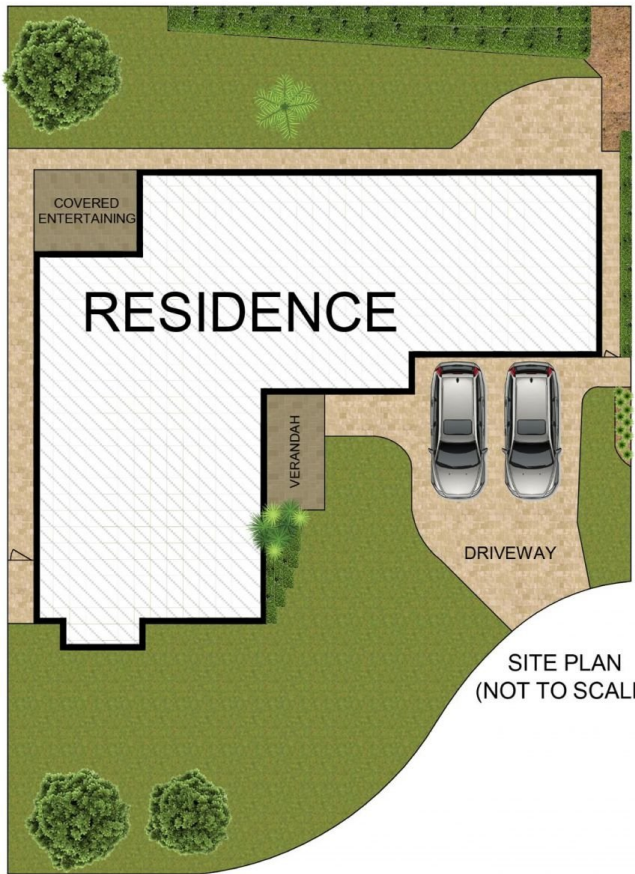
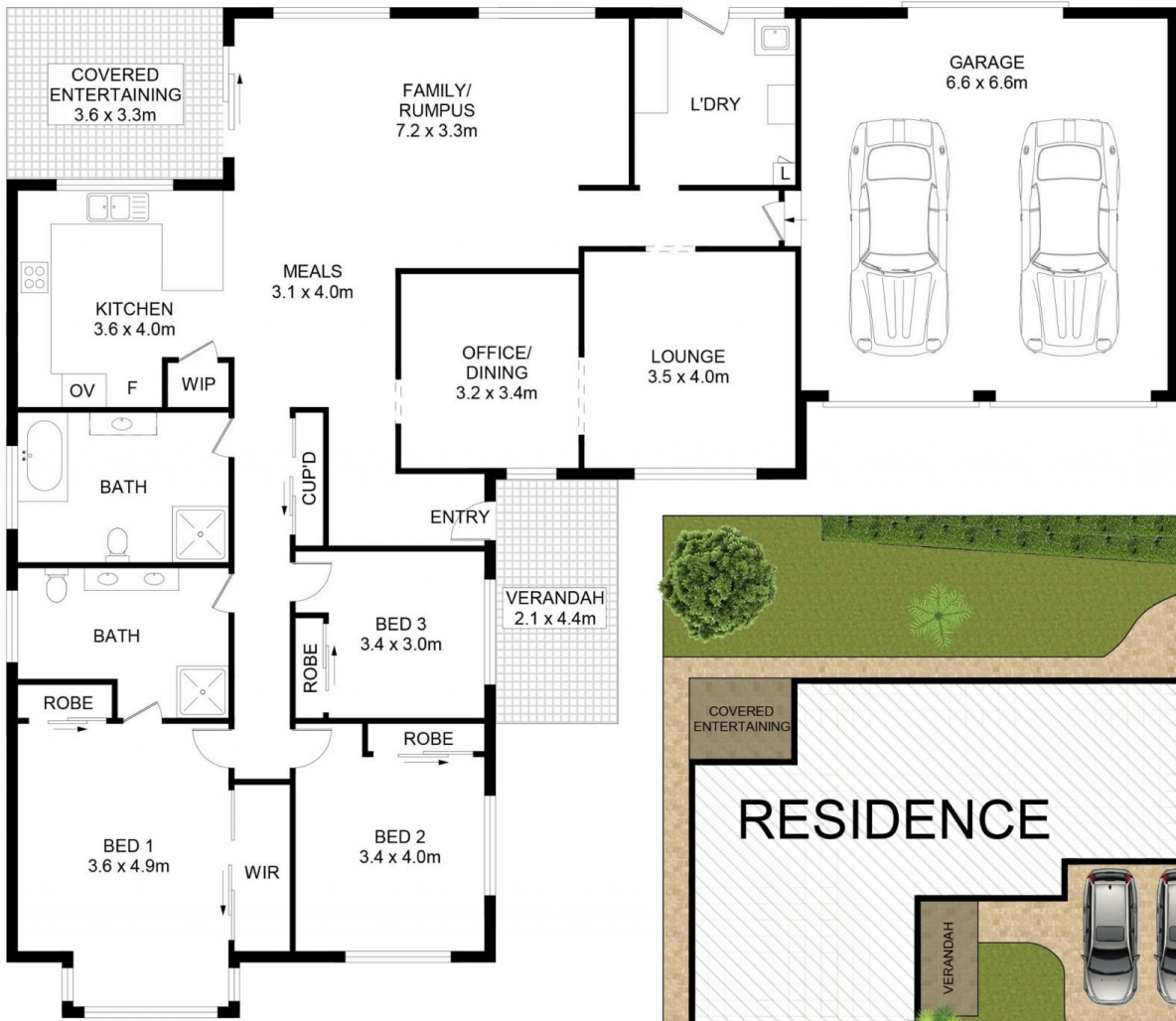
Type : House
Land Size : 600 sqm
View : <https://www.castlehaven.com.au/sale/nsw/hills/kellyville/residential/house/8123065>



Deb Newton
02 9634 5222

[For full version visit the website](https://www.castlehaven.com.au)

<https://www.castlehaven.com.au>



6 Proteus Place, Kellyville

DISCLAIMER: No liability for the accuracy of details contained within our floor plans. All plans are drawn and also checked to the best of our ability, however information contained in our floor plans such as area calculations are approximate, and have not been surveyed or drawn to scale. Our floor plans are for representational purposes only and should be used as such. Do not attempt to refer to our floor plans for structural or detailed information.



CastleHaven