




CastleHaven



66 Sanctuary Drive Beaumont Hills NSW

4  2  2 

Discover the epitome of comfortable and convenient living in this magnificent, beautifully presented, four-bedroom single-level Eden Brae home nestled in the heart of Beaumont Hills on a 640msq block. With its breathtaking design, spacious layout, and exceptional features, this is a residence that promises a lifetime of cherished memories. Welcome to the home you've always dreamed of!

Price : \$ 1,770,500

Land Size : 640 sqm

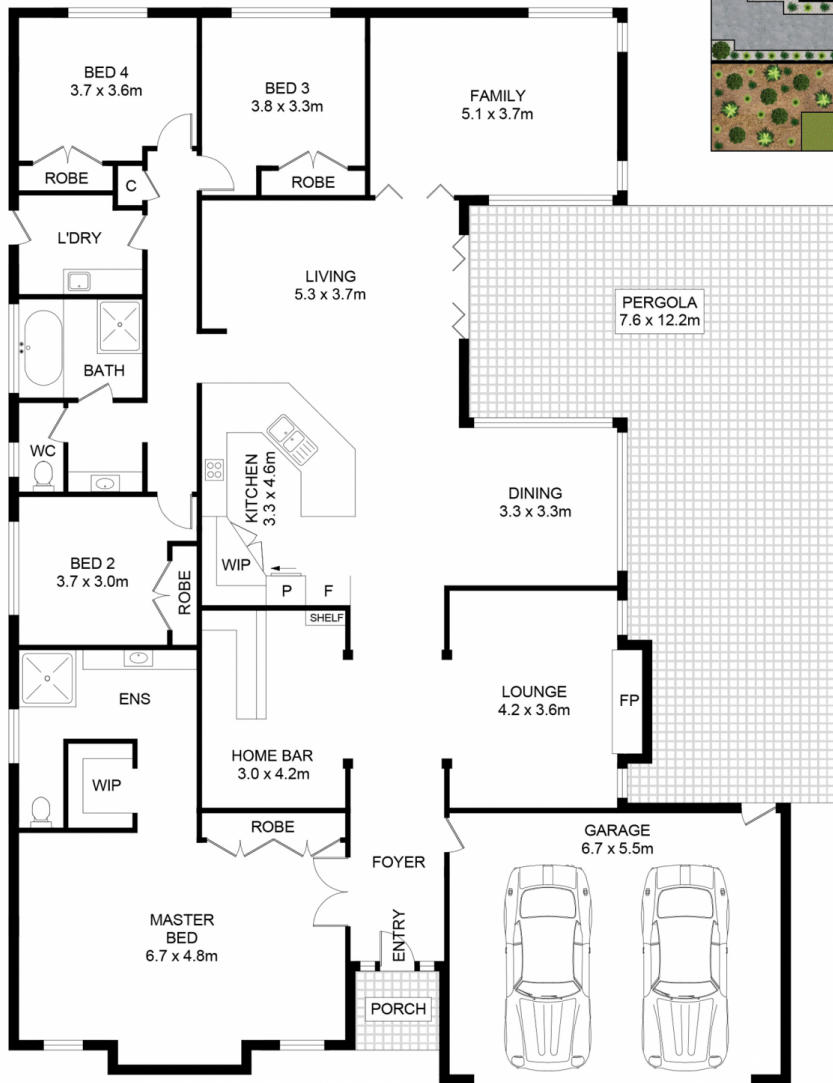
View : <https://www.castlehaven.com.au/sale/nsw/hills/beaumont-hills/residential/house/7620116>

Spacious Entertaining Area: Get ready to host unforgettable gatherings in your inviting entertaining area. Whether you're celebrating special occasions or simply enjoying quality time with loved ones, this expansive, private space provides the perfect backdrop for creating lasting memories.

Oversized Master Bedroom: Retreat to your private sanctuary in the form of an enormous master bedroom.



Deb Newton
02 9634 5222



SITE PLAN
(NOT TO SCALE)

66 Sanctuary Drive, Beaumont Hills

DISCLAIMER: No liability for the accuracy of details contained within our floor plans. All plans are drawn and also checked to the best of our ability, however information contained in our floor plans such as area calculations are approximate, and have not been surveyed or drawn to scale. Our floor plans are for representational purposes only and should be used as such. Do not attempt to refer to our floor plans for structural or detailed information.



CastleHaven