

# CastleHaven



## 20 Water Creek Boulevard Kellyville NSW

4 3 3

Picture this: a new designer home in one of Kellyville's growth areas, fastidiously brought to life by an award-winning builder. This is the reality in Water Creek Blvd, where Billyard Homes is putting the finishing touches on a dream two-storey property.

With four bedrooms, a separate study, multiple living areas, large triple garage and thoughtful landscaping this home leaves no stone unturned.

At the centre of the home is a gourmet, polyurethane kitchen with an island bench and huge walk-in pantry. Quality Smeg appliances, glass splashbacks and stone benchtops ensure this is a kitchen that owners will love being in. Surrounding the stunning kitchen is a large, open-plan living space perfect for informal family gatherings and casual meals.

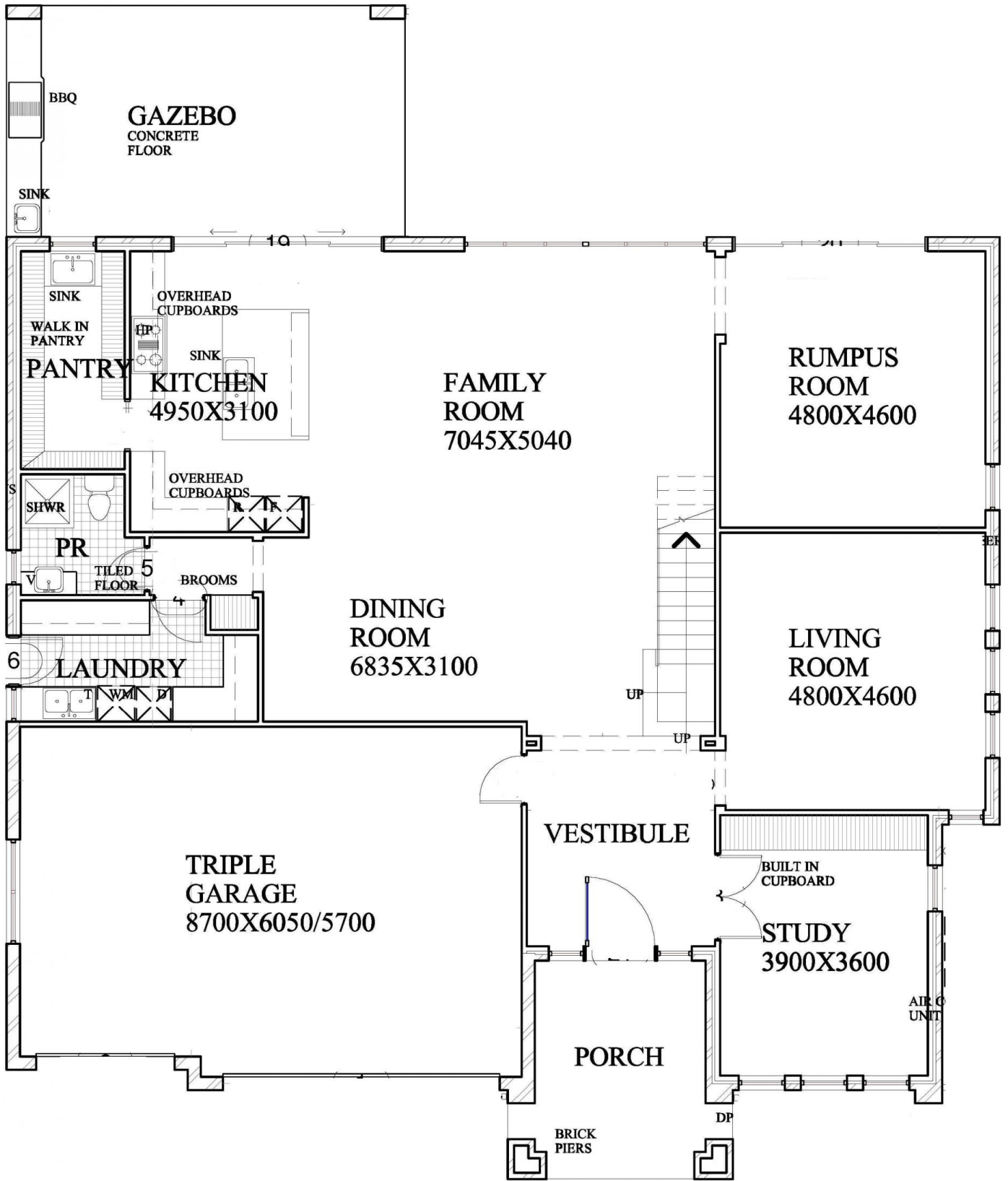
A formal dining room, formal living room and separate rumpus ensure there are multiple areas to unwind in this very special home.

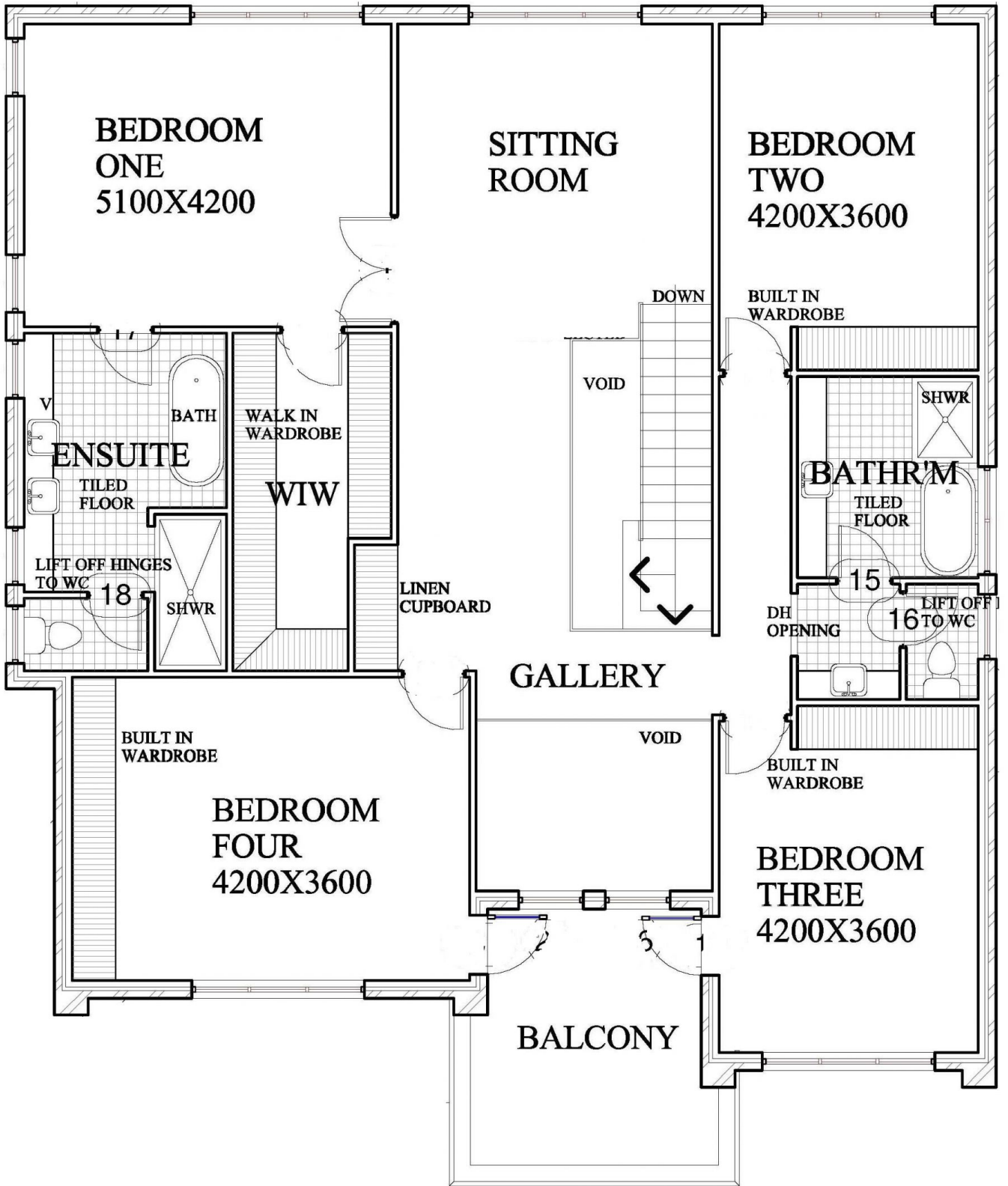
A stunning timber staircase with glass balustrade and stainless steel handrail leads you upstairs to yet another rumpus area and the four generous bedrooms. The master room is not to be missed with a decadent walk-in wardrobe and luxury ensuite with freestanding bath and double

**Land Size** : 702 sqm  
**View** : <https://www.castlehaven.com.au/sale/nsw/hills/kellyville/residential/house/5735892>



**Colin Moss JP**  
**02 9634 5222**





**BEDROOM ONE**  
5100X4200

**SITTING ROOM**

**BEDROOM TWO**  
4200X3600

**ENSUITE**

BATH

WALK IN WARDROBE

WIW

TILED FLOOR

LIFT OFF HINGES TO WC

18

SHWR

LINEN CUPBOARD

VOID

DOWN

BUILT IN WARDROBE

**BATHRM**

SHWR

TILED FLOOR

15

DH OPENING

LIFT OFF TO WC

16

BUILT IN WARDROBE

**BEDROOM FOUR**  
4200X3600

**GALLERY**

VOID

BUILT IN WARDROBE

**BEDROOM THREE**  
4200X3600

**BALCONY**