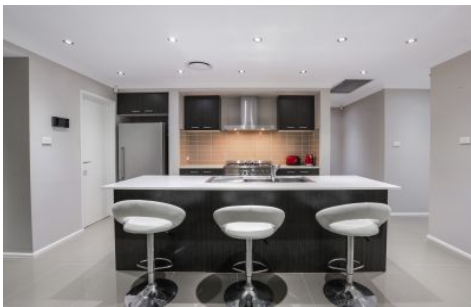


CastleHaven



5 Magenta Street Kellyville Ridge NSW

4  2  2 

Enjoy luxurious single level living with this beautiful four bedroom, located in a quiet Kellyville Ridge pocket close to convenience and a beautiful lifestyle.

Entertaining will be a dream, with a large outdoor alfresco area ready and primed for functions and family dinners, and top quality finishes in the luxuriously appointed kitchen and combined living dining area.

An attractive facade welcomes you into this stunning home, with well manicured lawns and well kept gardens and lawns. Inside the home you'll be treated to large tiles throughout the main living areas and to the bathrooms.

Located in the leafy heart of Kellyville Ridge, enjoy convenience and lifestyle around you. Transport is no issue, with major buses running minutes walk away, and the Cudgegong Metro Station just 2 kms away. Enjoy quiet weekend walks and parkland for the kids, with the famed Lakes Edge Park and Pond in The Ponds located just

View : <https://www.castlehaven.com.au/sale/nsw/hills/kellyville-ridge/residential/house/5735832>



Castlehaven Realtors
02 9634 5222

<https://www.castlehaven.com.au>