




# CastleHaven



16 Seath Street Kellyville NSW

4  3  3 

Every now and then a home comes along which just stops you in your tracks with knock out good looks and the very best in modern living oozing through every room. This brand new designer home is one such home.

This substantial single-level home has abundant open plan spaces with its gourmet kitchen the hub of a vast living and dining space. Polyurethane cupboards and a waterfall Caesar stone bench top with complementary Smeg appliances start the story of sophistication and quality that is found in every room.

Off the stunning living area with its porcelain-tiled floor is a sunny alfresco area with outdoor sink and bi-fold servery access to the internal scullery which adjoins the kitchen. Time outdoors will be nothing but a joy with easy to care for gardens (with room for a pool) already part of the property's landscaping.

If you're done entertaining in these magnificent spaces

**Price** : \$ 1,380,000

**Land Size** : 827 sqm

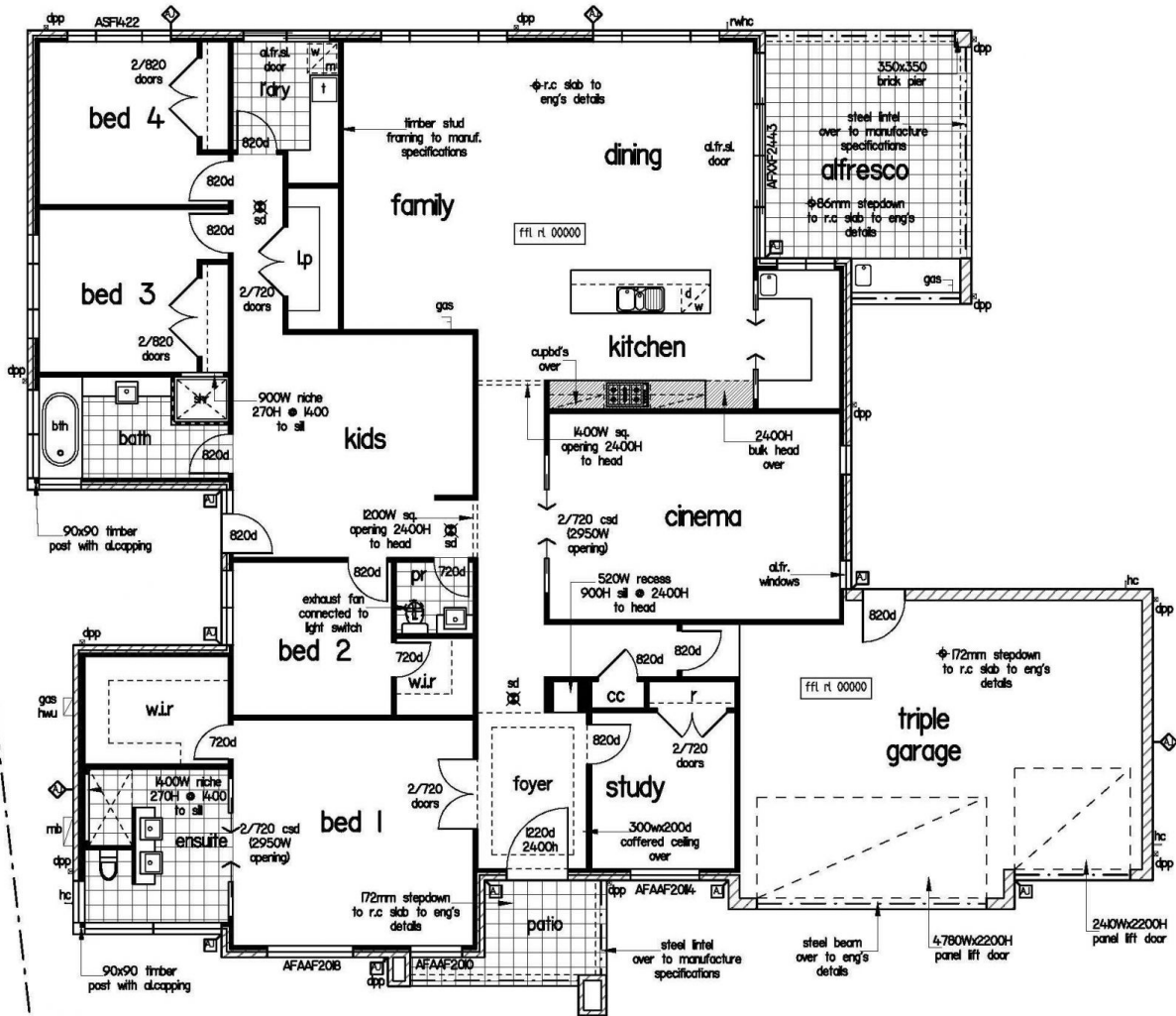
**View** : <https://www.castlehaven.com.au/sale/nsw/hills/kellyville/residential/house/5735707>



**Deb Newton**  
02 9634 5222

There have been minor amendments to this plan

359sqm 38.6sq



FLOOR PLAN 1:100