

# CastleHaven



## 6 Tathra Place Castle Hill NSW

3  1  1 

Imagine a level 816sqm block in Castle Hill that's just a walk to Towers, the future rail link, and city bus interchange. Add to this a well presented three-bedroom home and you start to build a picture of a winning property. This brick veneer home is fresh to the market and just keeps on giving to potential buyers. It's very central location means access to shops, transport and schools is a given and it's an easy walk to Olola Ave Reserve and sporting fields at Greenup Park. Despite, all these nearby amenities the home enjoys being nestled in a quiet and well-established cul-de-sac, giving potential owners the best of both worlds.

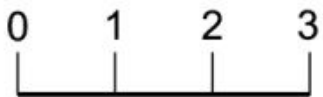
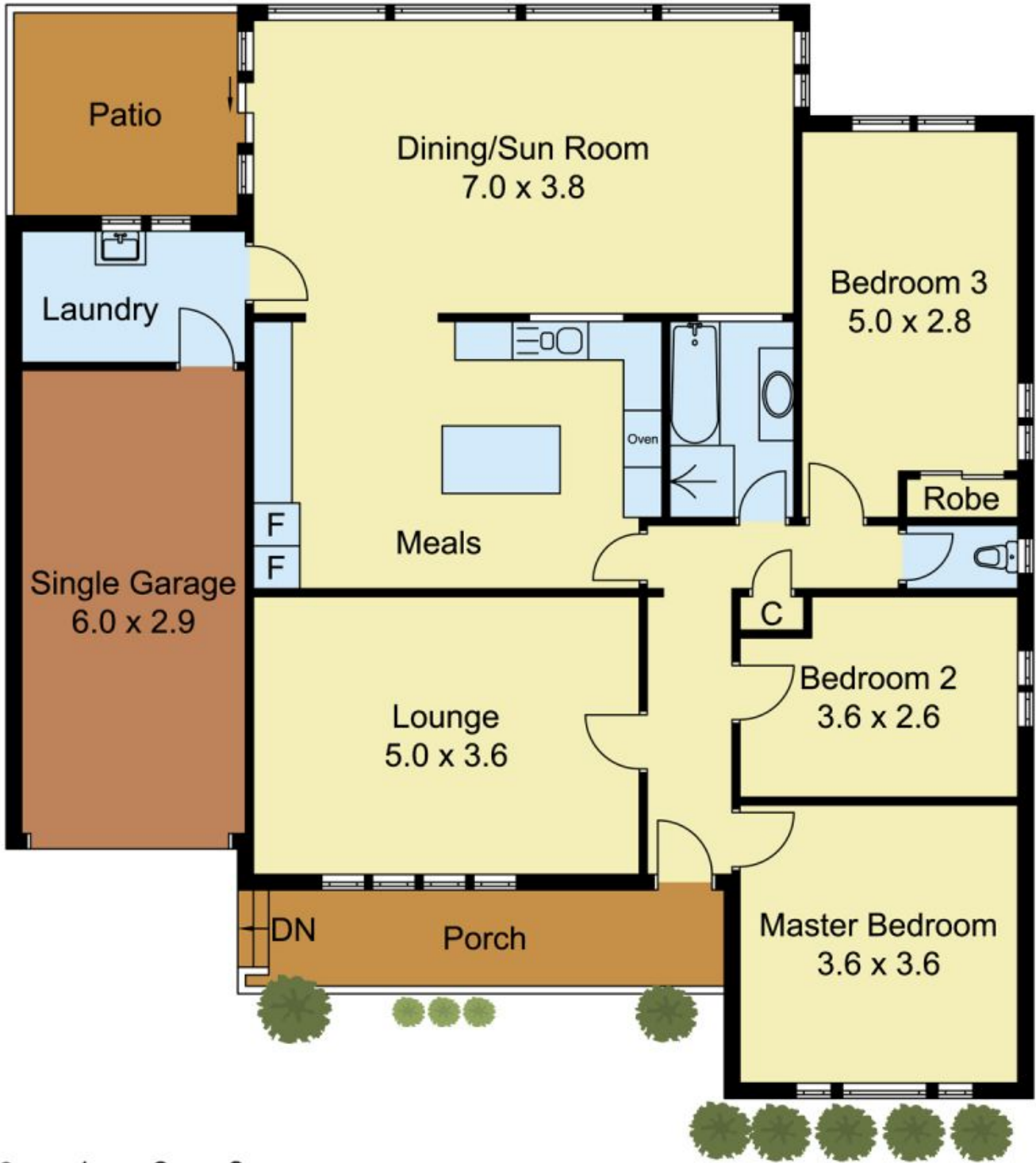
Complementing this excellent positioning is a home that ticks a lot of boxes. The external façade has been rendered and dressed with easy care front yard gardens. Inside, there is a spacious and updated kitchen, three bedrooms with built-in robes to two and polished timber floors with

**Land Size** : 816 sqm

**View** : <https://www.castlehaven.com.au/sale/nsw/hills/castle-hill/residential/house/5735289>



**Deb Newton**  
**02 9634 5222**



Scale in metres, indicative only. Dimensions are approximate. All information contained herein is gathered from sources we believe to be reliable. However we cannot guarantee its accuracy and interested persons should rely on their own enquiries.

6 Tathra Place, Castle Hill