

CastleHaven



3 Amy Hawkins Circuit Kellyville NSW

4 3 2

Tucked away on the high side of a quiet avenue, 42 squares of a truly special family home with loads of style and class. Porcelain tile flooring throughout the grand formal living areas, both family rooms and separate rumpus room. Delightful gourmet kitchen offers granite benchtops, gas hot plates, stainless steel appliances and extends seamlessly to the breakfast conservatory. Four double bedrooms, master with two walk-in wardrobes large ensuite with spa bath. Tiled to the ceiling in all three bathrooms. Ducted air conditioning, alarm, auto garage doors. Large rear private yard and much, much more. For more information or an appointment, please call Vicky Williams on 0411 253 878.

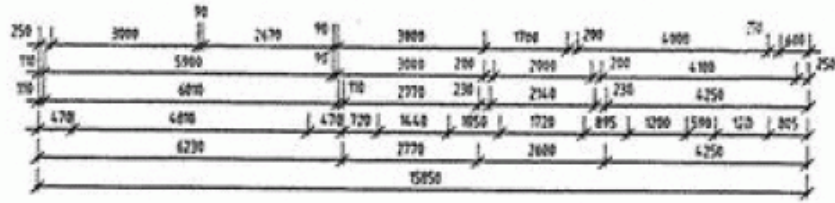
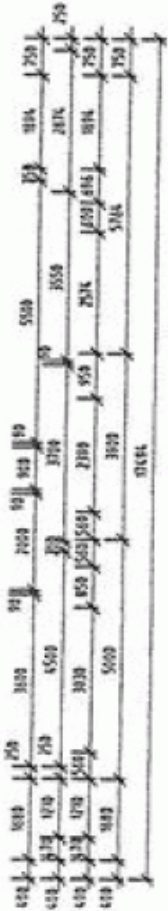
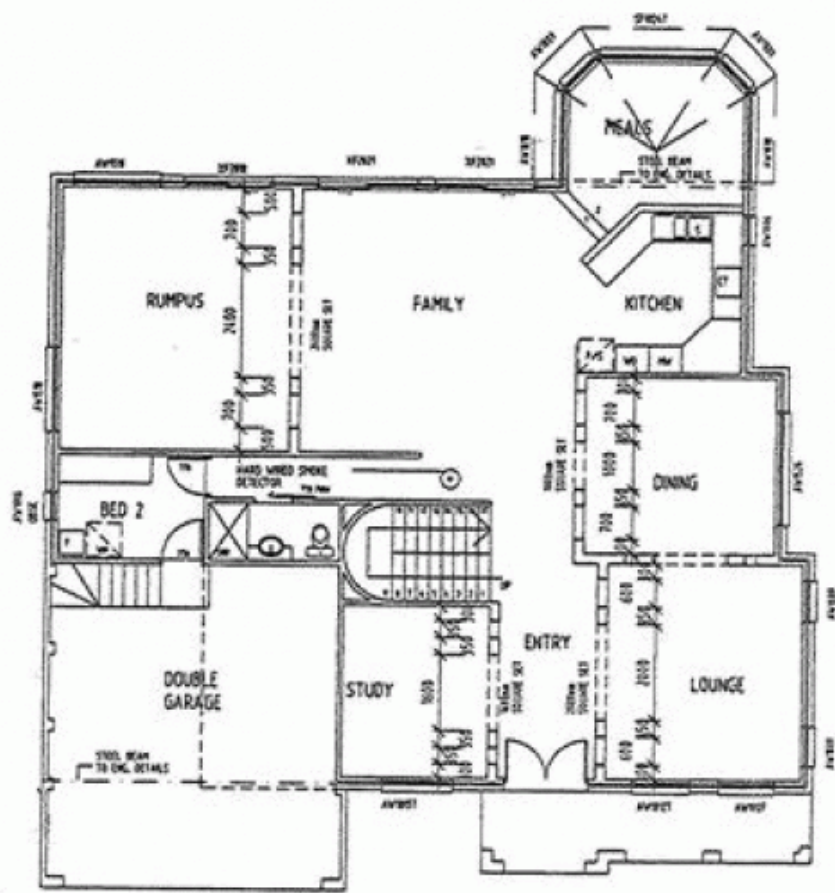
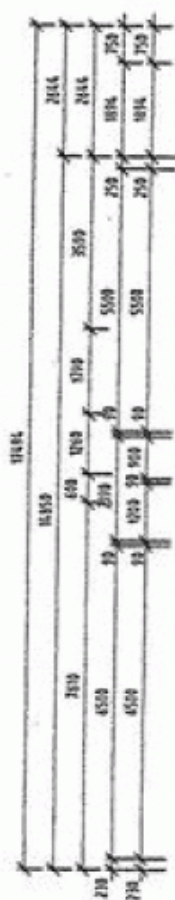
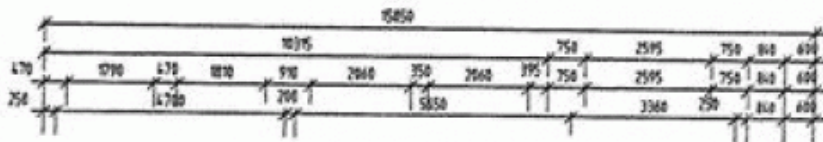
Land Size : 653 sqm

View : <https://www.castlehaven.com.au/sale/nsw/hills/kellyville/residential/house/5735129>



Vicky Williams
02 9634 5222

A >



PROPOSED GROUND FLOOR 1:100

CALCULATIONS A
 GROUND FLOOR
 PORCH
 BALCONY
 DOUBLE GARAGE
 FIRST FLOOR
 TOTAL:

