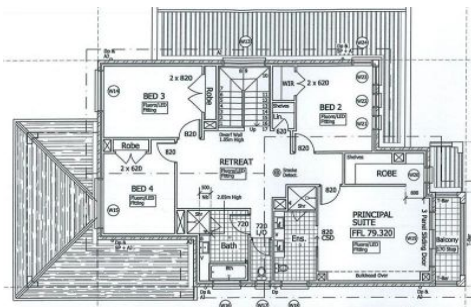


CastleHaven



PROPERTY: LOT 129 ANNEFIELD STREET KELLYVILLE RIDGE

HOUSE TYPE: KENNEDY - PALOMINO FACADE

INTERNAL:

- CERAMIC FLOOR TILES AS SPECIFIED
- CARPET ALLOWANCE \$5000
- 300mm STONE BENCHTOPS TO KITCHEN & VANITIES
- HYDROCO DOWN TIGHT SILENTERS
- DOUBLE WIDTH FRONT GARAGE DOOR WITH REMOTE CONTROL
- GARAGE DOOR ON INNER INTERNAL DOOR SUBSTRUCTURE
- GARAGE DOOR/FRIDGE COMPARTMENT FRONT WITH DOOR LOCK
- MIXER TAPS THROUGHOUT KITCHEN & LAUNDRY WITH PULL-OUT SPRAY
- 2 HEAT / FAN LIGHT TO BATHROOM & ENSUITE
- ONE INTERNAL GAS HEATING POINT
- 2 EXHAUST POINTS & TYPHOON POINT
- INSULATION TO CEILING OF LIVING AREAS & EXTERNAL WALLS

APPLIANCES:

- ELECTRIC STAINLESS STEEL OVEN
- GAS STAINLESS STEEL COOK TOP
- REFRIGERATOR
- HOT WATER - GAS - EXTERNAL HEAT EXCHANGER IN LTR
- FROST FREE DISHWASHER CYCLE AND CLOSING WITH 2 LITRES

EXTERNAL:

- HARD LANDSCAPING TO FRONT
- TURF TO FRONT AND BACK
- FENCED ALFRESCO COMPLETE WITH GAS BBQ POINT, POWER POINT & CEILING FAN
- CONCRETE DRIVEWAY
- FENCING
- LETTERBOX

Kellyville Ridge

4 🏠 3 🚗 2 🚗

Brand new ultra modern two storey home with formal and casual living areas including upstairs rumpus room, stylish kitchen with stainless steel appliances and an alfresco area complete with gas bbq point, power point and ceiling fan. Gas hot water service and ducted air conditioning. Four bedrooms PLUS STUDY. Principal suite with balcony, ensuite bathroom and walk-in robe, built-in robes to all other bedrooms. Level block in a popular estate. Call us now for more information.

Floor tiles, carpet allowance, stone benchtops to kitchen & vanities, auto double garage, mixer taps throughout (kitchen and laundry with pull-out spray), 2 heat/fan/light to bathroom and ensuite, gas heating point, phone & tv points, insulation, turf to front & back, light landscaping to front, driveway and fencing.

Land Size : 592 sqm

View : <https://www.castlehaven.com.au/sale/nsw/hills/kellyville-ridge/residential/house/5735121>



Colin Moss JP
02 9634 5222

