

# CastleHaven



**12/23-25 Showground Road Castle Hill NSW**

**3**  **2**  **2** 

Don't leave it too late to view this excellent three-bedroom apartment that's neatly located within the heart of Castle Hill, with an easy walk to top Castle Hill attractions including Castle Towers, The Metro, public transport links, the area's prime dining locations and local schools.

**Price** : \$ 905,000

**View** : <https://www.castlehaven.com.au/sale/nsw/hills/castle-hill/residential/apartment/5718008>

Set in an attractive complex of only 14, this apartment has been well cared for, recently updated with brand new carpets and freshly painted in neutral tones. Located at the rear of a boutique block, it's perfect for downsizers, young families and investors alike.

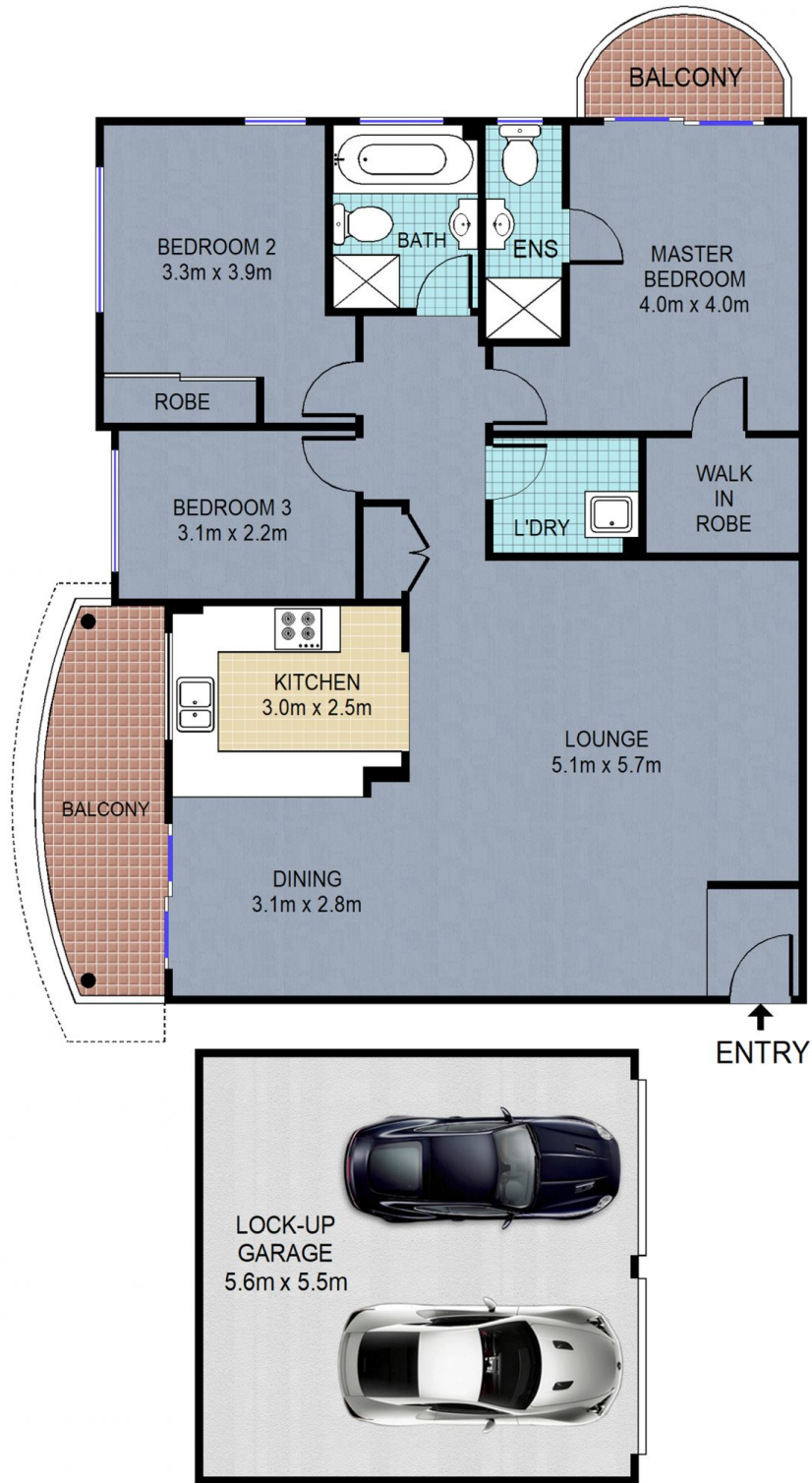
Expansive open plan living includes a dining area which flows to the balcony with a leafy outlook. The stylish kitchen has been thoughtfully designed and generously appointed with stone benchtops, dishwasher and microwave.



**Deb Newton**  
**02 9634 5222**

<https://www.castlehaven.com.au>





12/23-25 Showground Road, **CASTLE HILL**

**CastleHaven**

DISCLAIMER: All dimensions are approximate and for illustrative purposes. Interested parties should rely on their own enquiries.