

CastleHaven



12 & 12a Swift Parrot Close Kellyville NSW

8 🚗 6 🚗 4 🚗

We are pleased to present this excellent opportunity to secure one of the Hills best investment opportunities, situated in a quiet area.

Located in the coveted 'Grey Gum' estate, this dual income duplex opportunity provides two, four bedroom duplexes, with two master bedrooms in both duplexes. Living space doesn't have to come at a premium, with open plan living leading out onto an appealing outdoor tiled verandah and backyard.

Expect high end quality with upstairs balcony to the master bedrooms, combined with ensuite and walk-in-robe. Luxury styling comes with the package, with top quality modern fittings in the bathrooms and kitchen, with all modern stainless steel appliances and Caesarstone benchtops.

Close to the future North West Rail Link, Rouse Hill Town Centre, top schools and scenic parks, convenience is at the forefront of this home. Combine that with luxury fittings,

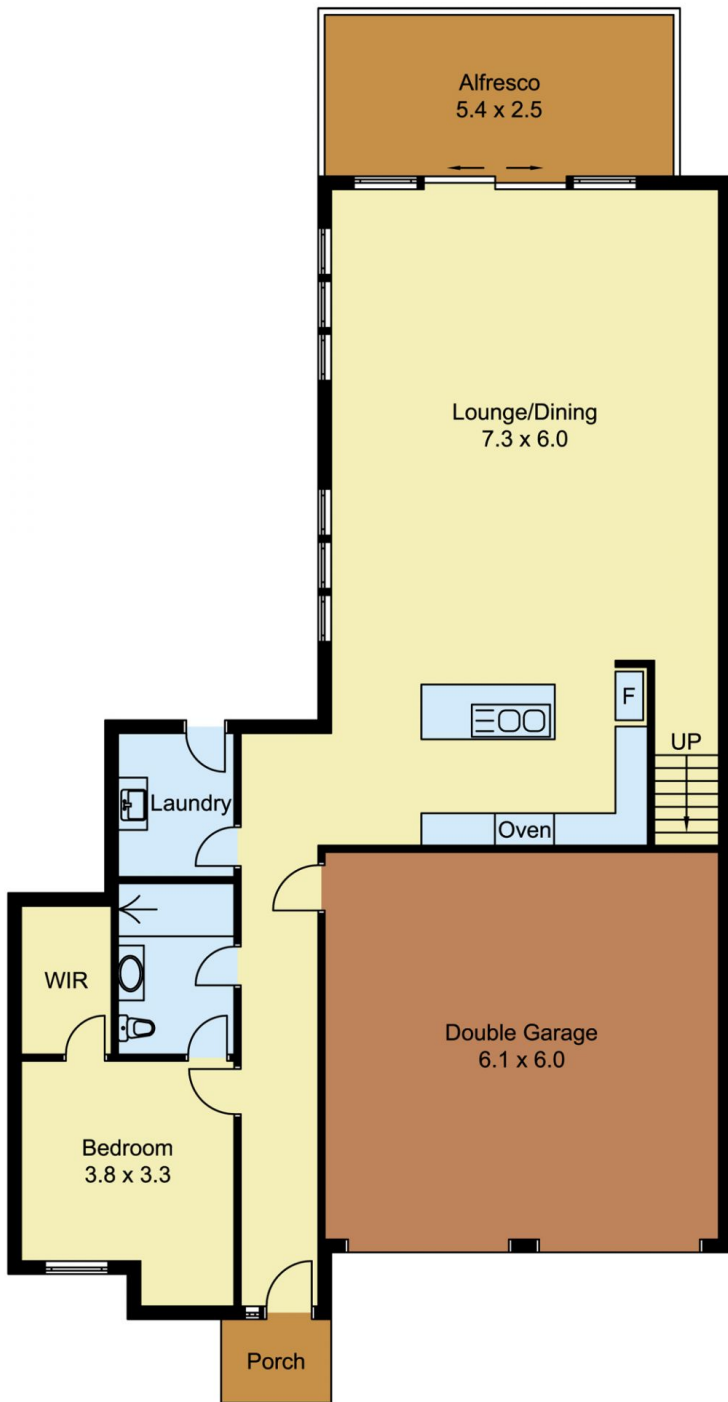
Land Size : 759 sqm

View : <https://www.castlehaven.com.au/sale/nsw/hills/kellyville/residential/semi-detached/5711644>

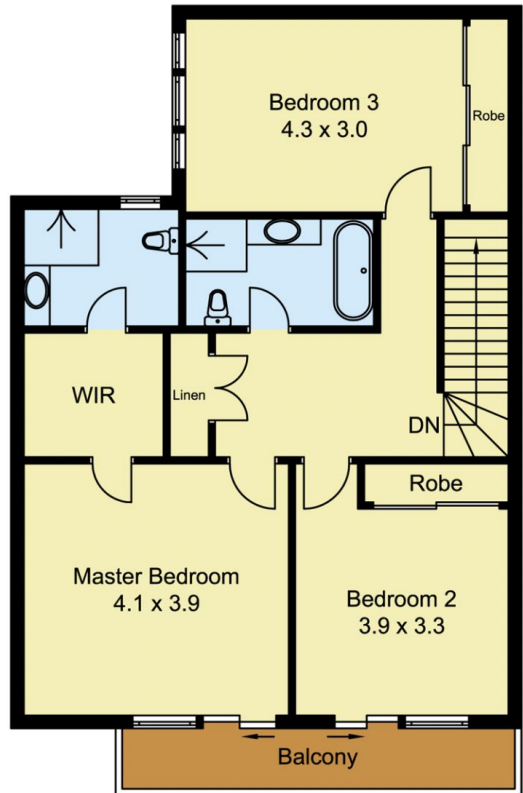


Castlehaven Realtors
02 9634 5222

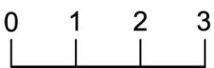
<https://www.castlehaven.com.au>



GROUND FLOOR



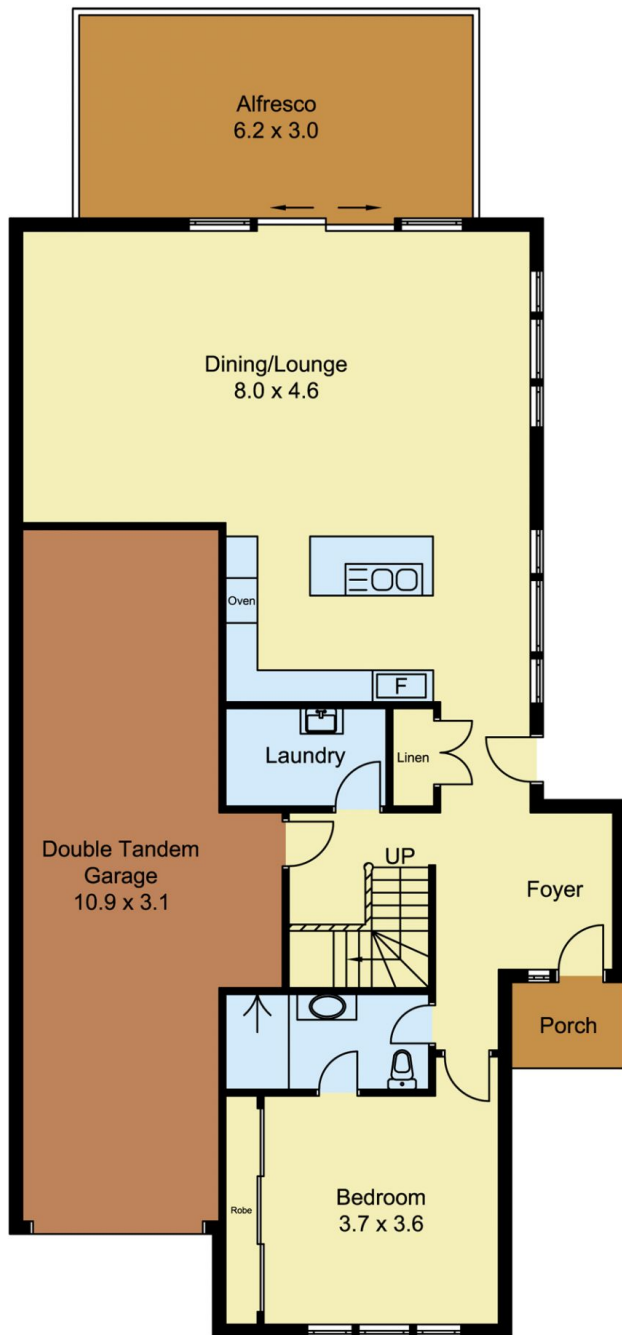
FIRST FLOOR



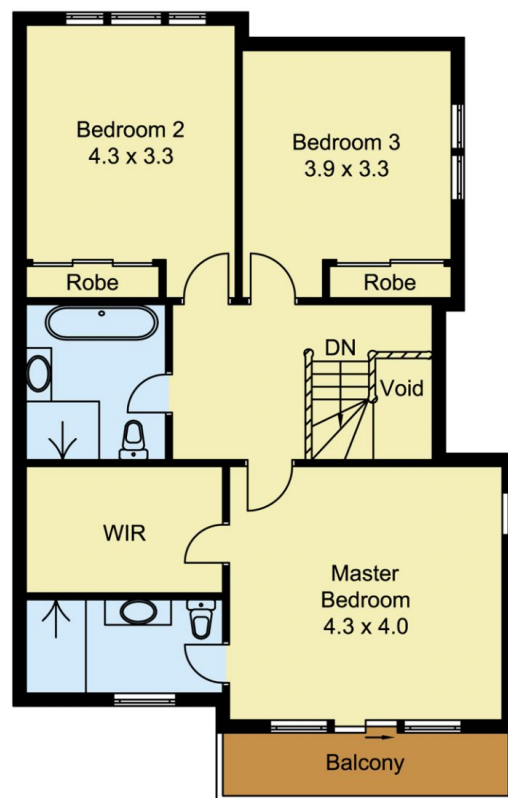
Scale in metres, indicative only. Dimensions are approximate. All information contained herein is gathered from sources we believe to be reliable. However, we cannot guarantee its accuracy and interested persons should rely on their own enquiries.



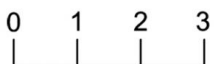
12 Swift Parrot Close, Kellyville



GROUND FLOOR



FIRST FLOOR



Scale in metres, indicative only. Dimensions are approximate. All information contained herein is gathered from sources we believe to be reliable. However, we cannot guarantee its accuracy and interested persons should rely on their own enquiries.



12A Swift Parrot Close, Kellyville