

CastleHaven



Castle Hill

4 2 2

This stylish family home in the popular Knightsbridge Estate takes in the most breathtaking sunset views from its timber deck. A timeless classic, beautifully maintained and designed to make the very most of its peaceful bush block while also offering contemporary living and the warmth of luxury features including cedar windows.

Entry to the home is from an elevated front deck and from there expansive upstairs, living unfolds. There are three bedrooms, main with ensuite, a timber kitchen featuring raked ceilings and a number of living areas.

The formal lounge and dining are nicely presented with soaring vaulted ceilings and the family room has ageless timber floors that lead out to an enormous timber deck with breathtaking bushland views.

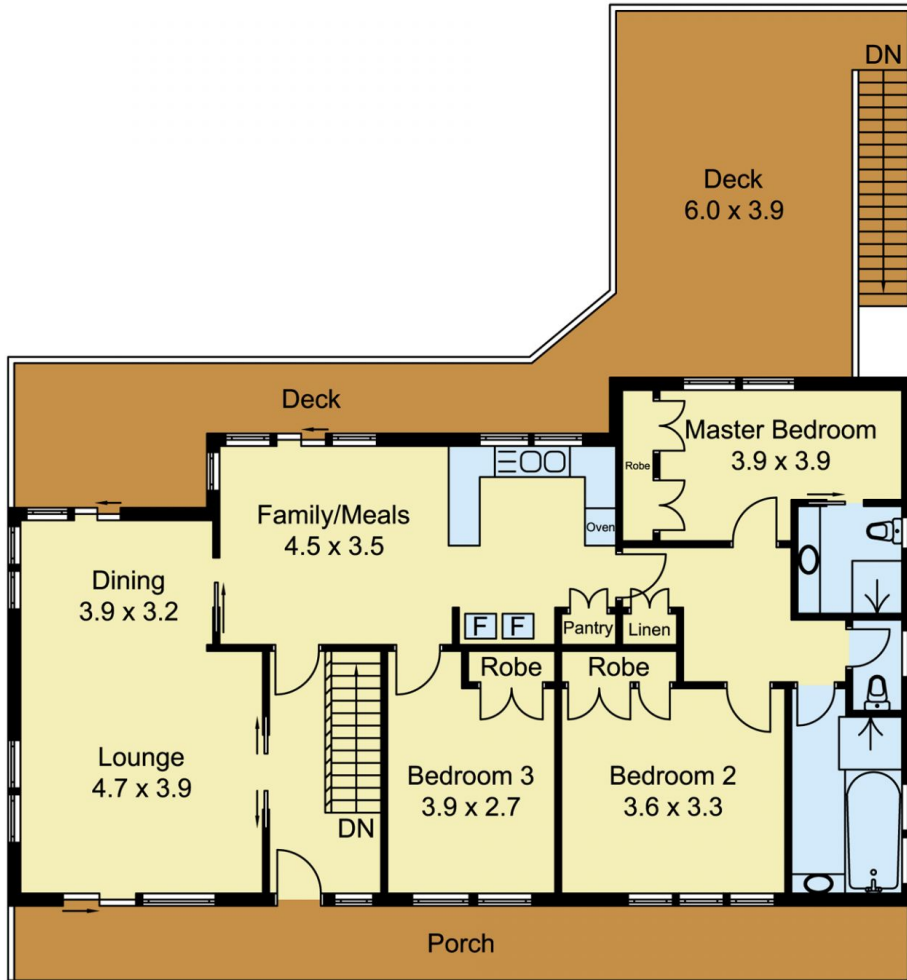
Downstairs is a cosy rumpus and fourth bedroom with ensuite bathroom and a spacious laundry that will make managing family washing a breeze. The downstairs area

Land Size : 1310 sqm

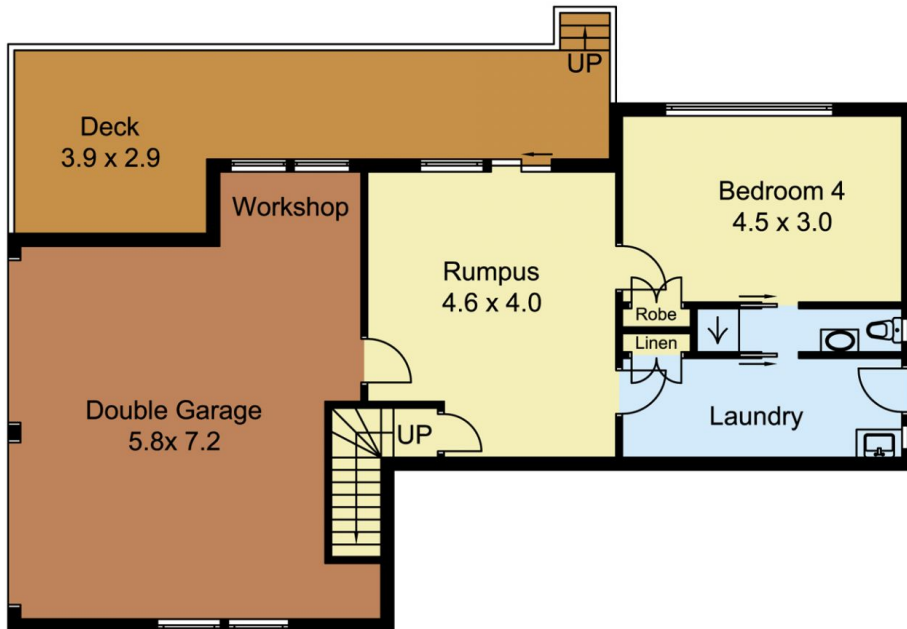
View : <https://www.castlehaven.com.au/sale/nsw/hills/castle-hill/residential/house/5705140>



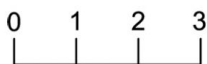
Deb Newton
02 9634 5222



FIRST FLOOR



GROUND FLOOR



Scale in metres, indicative only. Dimensions are approximate. All information contained herein is gathered from sources we believe to be reliable. However, we cannot guarantee its accuracy and interested persons should rely on their own enquiries.

126 Ridgrop Drive, Castle Hill